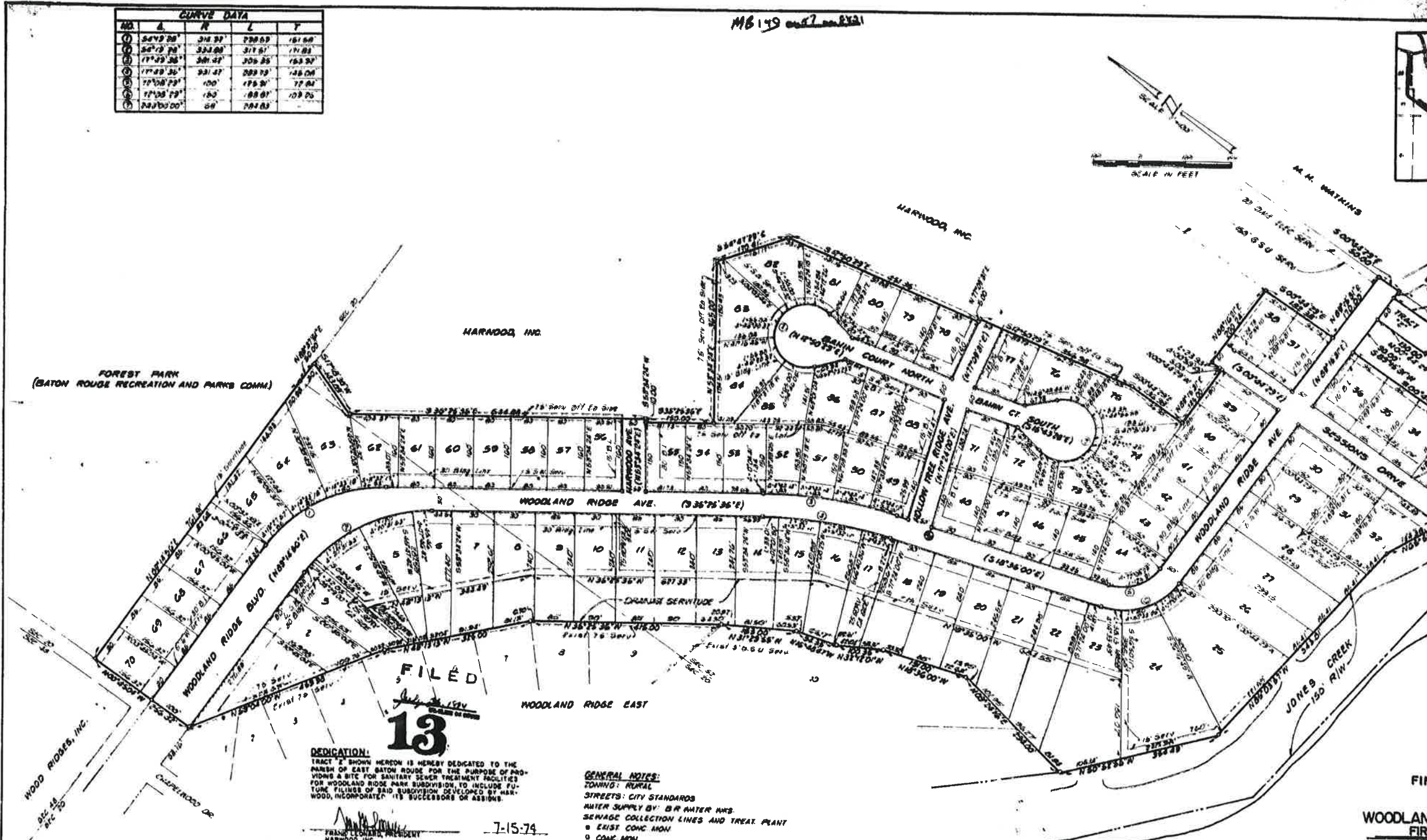
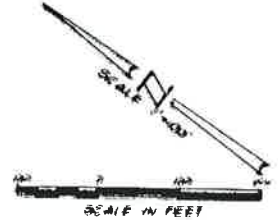


CURVE DATA				
NO.	Δ	R	L	T
1	54°19'28"	312.31'	730.63'	151.68'
2	54°19'28"	323.00'	311.61'	171.82'
3	17°29'26"	301.47'	308.25'	163.37'
4	17°29'26"	331.47'	289.73'	148.06'
5	77°08'29"	100'	175.31'	77.04'
6	77°08'29"	100'	175.31'	77.04'
7	224°00'00"	50'	283.83'	

M6149 sub 7



FILED
13
 JUL 15 1974

DEDICATION:
 TRACT 2 SHOWN HEREON IS HEREBY DEDICATED TO THE PARISH OF EAST BATON ROUGE FOR THE PURPOSE OF PROVIDING A SITE FOR SANITARY SEWER TREATMENT FACILITIES FOR WOODLAND RIDGE PARK SUBDIVISION, TO INCLUDE FUTURE FILINGS OF SAID SUBDIVISION DEVELOPED BY HARWOOD, INCORPORATED, ITS SUCCESSORS OR ASSIGNS.

GENERAL NOTES:
 ZONING: RURAL
 STREETS: CITY STANDARDS
 WATER SUPPLY BY: BR WATER WWS
 SEWAGE COLLECTION LINES AND TREAT PLANT
 • EXIST CONC MON
 ○ CONC MON.
 ACREAGE: 47.86 AC.

BASE BEARING:
 N35°00'00"W - NORTH PROPERTY LINE OF WOODLAND RIDGE EAST SUBD.

BENCH MARK:
 ELEV. 35.85' - TOP OF CONCRETE MONUMENT AT N.W. CORNER LOT 88.



CERTIFICATION: THIS IS TO CERTIFY THAT THIS PLAT CONFORMS TO ALL REVISED STATUTES 38:001 ET SEQ AND CONFORMS TO ALL PARISH ORDINANCES CONCERNING THE SUBDIVISION OF LAND

EDWARD E. EVANS, INC.
 CONSULTING ENGINEERS

DEDICATION: THE RIGHT OF WAY OF STREETS SHOWN HEREON, IF NOT PREVIOUSLY DEDICATED, ARE HEREBY DEDICATED TO THE PERPETUAL USE OF THE PUBLIC. ALL AREAS SHOWN AS SERVICED ARE GRANTED TO THE PUBLIC FOR USE OF UTILITIES, DRAINAGE, STORM REMOVAL OR OTHER PROPER PURPOSE FOR THE GENERAL USE OF THE PUBLIC AND BUILDING STRUCTURE, OR FENCE SHALL BE CONSTRUCTED, NOR FURNISHMENTS PLANTED WITHIN THE LIMITS OF WHICH THE SERVICED IS GRANTED.

FRANK LEONARD, PRESIDENT
 HARWOOD, INC. 7-15-74

FRANK LEONARD, PRESIDENT
 HARWOOD, INC. 7-15-74

RESTRICTIONS: ALL LOTS ARE SUBJECT TO DECLARATION OF PROTECTIVE COVENANTS (111) AS AN ADJUNCT HERETO

RECOMMENDED FOR APPROVAL
 DEPARTMENT OF PUBLIC WORKS
 CITY OF BATON ROUGE AND
 PARISH OF EAST BATON ROUGE

Ray W. Burgess
 DIRECTOR

APPROVED
 PLANNING COMMISSION
 CITY OF BATON ROUGE AND
 PARISH OF EAST BATON ROUGE

Richard A. McEwen
 PLANNING DIRECTOR

DATE: July 25, 1974

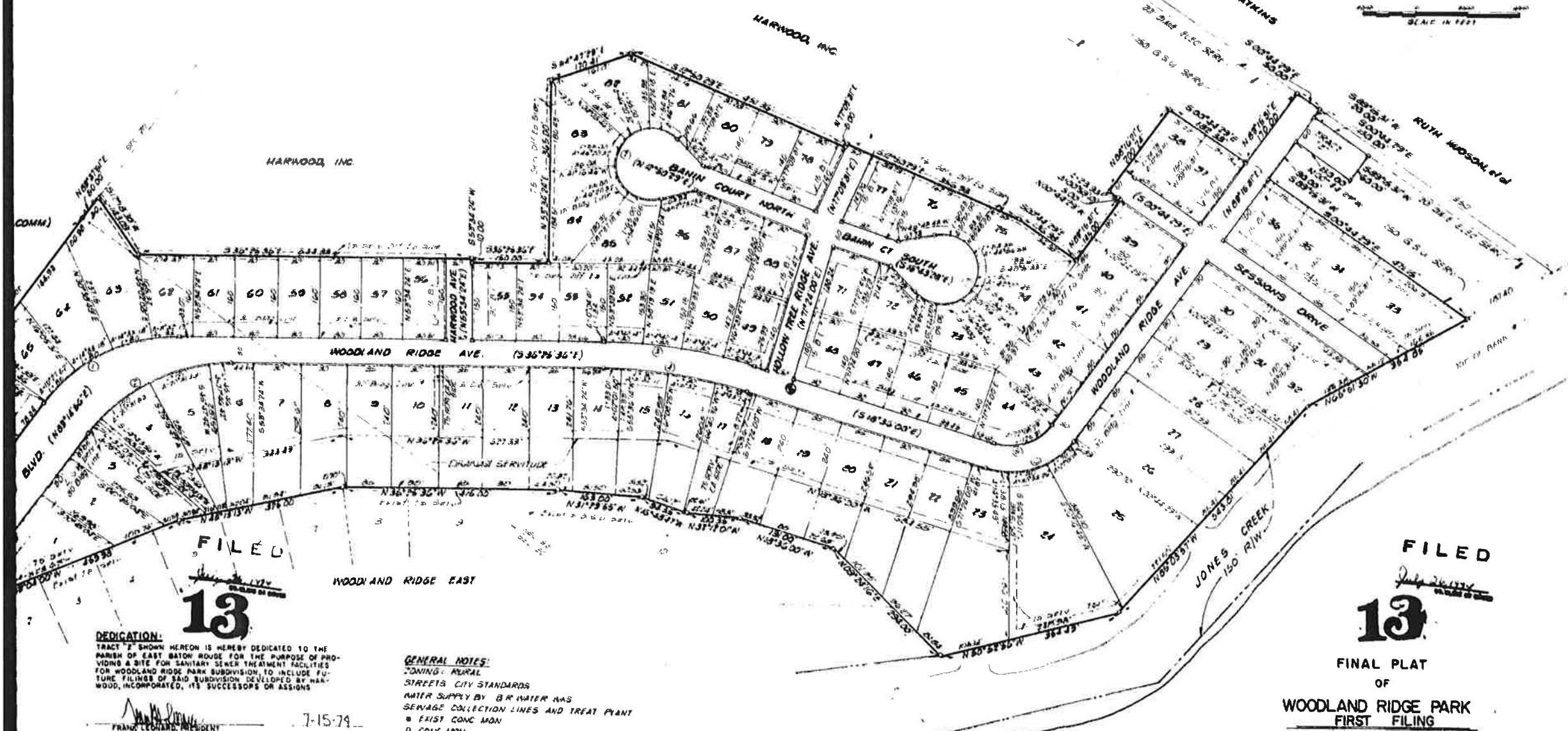
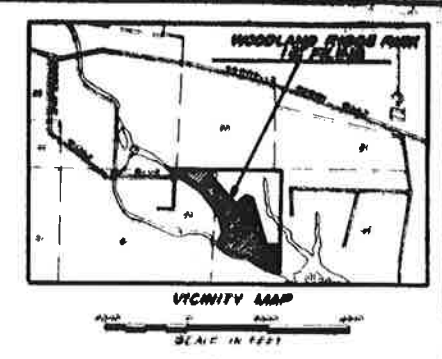
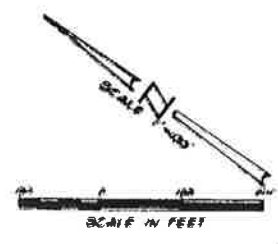
DATE: July 26, 1974

EDWARD E. EVANS
 CONSULTING ENGINEERS
 BATON ROUGE, LA.

WOODLAND FIRE
 LOCATED IN T7S-R2E, Q DISTRICT, EAST LOUISIANA.

300.00	101.00
311.00	114.00
305.00	103.00
299.00	100.00
293.00	97.00
287.00	94.00
281.00	91.00
275.00	88.00

M6149 and 27 and 2821



DEDICATION:
TRACT 72 SHOWN HEREON IS HEREBY DEDICATED TO THE PARISH OF EAST BATON ROUGE FOR THE PURPOSE OF PROVIDING A SITE FOR SANITARY SEWER TREATMENT FACILITIES FOR WOODLAND RIDGE PARK SUBDIVISION TO INCLUDE FUTURE FILINGS OF SAID SUBDIVISION DEVELOPED BY HARWOOD, INCORPORATED, ITS SUCCESSORS OR ASSIGNS

FRANK LEONARD, PRESIDENT
HARWOOD, INC.
7-15-74

HEREON, IF NOT PREVIOUSLY INDICATED, THE PUBLIC. ALL AREAS SHOWN AS OF UTILITIES, DRAINAGE, SEWER REMOVAL OF THE PUBLIC NO. BUILDING, STRUCTURE, NUMBERED PLANTED WITHIN THE LIMITS, BUT INTERFERE WITH ANY PURPOSE FOR

7-15-74

METHOD OF SEWAGE DISPOSAL OTHER THAN UNTIL THE METHOD OF SEWAGE THE EAST BATON ROUGE PARISH HEALTH UNIT

7-15-74

GENERAL NOTES:
ZONING: RURAL
STREETS: CITY STANDARDS
WATER SUPPLY BY BR WATER HAS
SEWAGE COLLECTION LINES AND TREAT PLANT
• FIRST CONC MON
• CONC MON
ACREAGE: 42.00 A.

BASE BEARING:
N39°00'00" W - NORTH PROPERTY LINE OF WOODLAND RIDGE EAST SUBD.

BENCH MARK:
ELEV. 30.83 - TOP OF CONCRETE MONUMENT AT N-W CORNER LOT 48.

CERTIFICATION THIS PLAN TO CERTIFY THAT THIS PLAN CONFORMS TO THE REVISIONS 2001-11-22 AND 11-27-01 AND CONFORMS TO THE SUBDIVISION OF LAND

John L. Evans
CONSULTING ENGINEER

RECOMMENDED FOR APPROVAL
DEPARTMENT OF PUBLIC WORKS
CITY OF BATON ROUGE AND
PARISH OF EAST BATON ROUGE

Ray W. Burgess
DIRECTOR

DATE: July 25, 1974

APPROVED
PLANNING COMMISSION
CITY OF BATON ROUGE AND
PARISH OF EAST BATON ROUGE

Richard Allen Egan
PLANNING DIRECTOR

DATE: July 26, 1974



FILED
13
FINAL PLAT
OF
WOODLAND RIDGE PARK
FIRST FILING

LOCATED IN SECTIONS 20 AND 82,
T7S-R2E, GREENSBURG LAND
DISTRICT, EAST BATON ROUGE PARISH,
LOUISIANA.

FOR
HARWOOD, INC.

EDWARD E. EVANS & ASSOCIATES, INC.
CONSULTING ENGINEERS
BATON ROUGE, LA.

DATE

Woodland
Ridge
Park